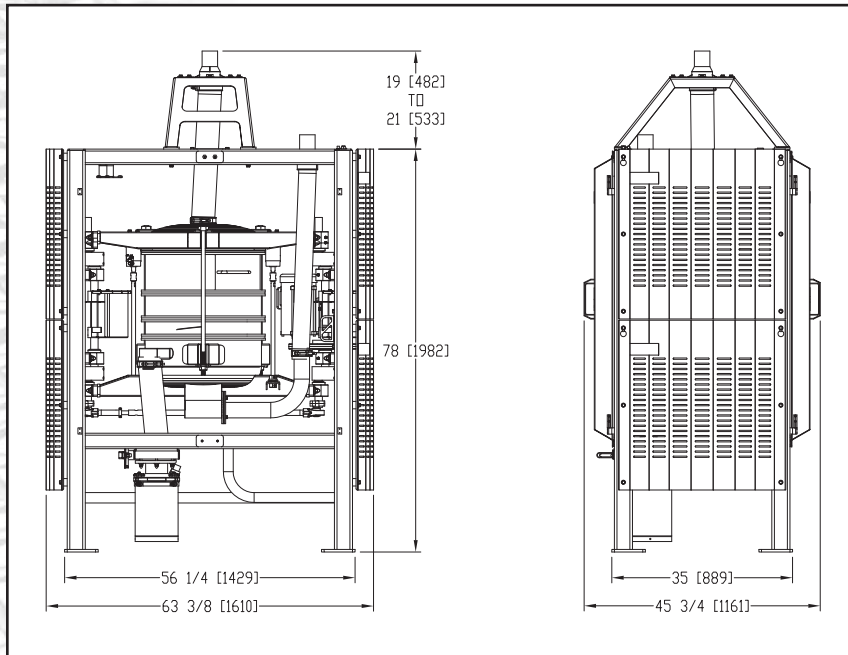
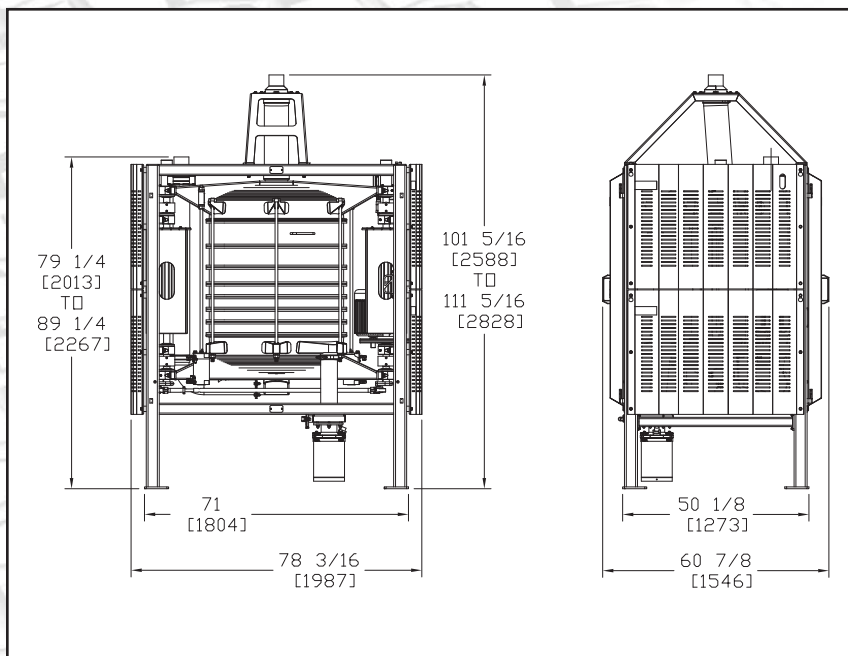


# QA Series In-Line Sifter Dimensions



## QA24

- Nominal Ø24" (Ø610 mm)
- Net cloth area 2 ft<sup>2</sup>/sieve (0.19 m<sup>2</sup>/sieve)
- Models with 2 to 5 sieves (0.37 to 0.93 m<sup>2</sup>)
- Net sieving area from 4 to 10 ft<sup>2</sup> (0.37 to 0.93 m<sup>2</sup>)
- One - 1 HP (0.75 kw) motor with V-belt drive
- Drive guards
- Up to Ø3" conveying lines
- Inlet and discharge support brackets
- Tailings container with manual butterfly valve
- Rates to 350 lbs/min (160 kg/min) on hard wheat flour with 30 mesh screens



## QA36

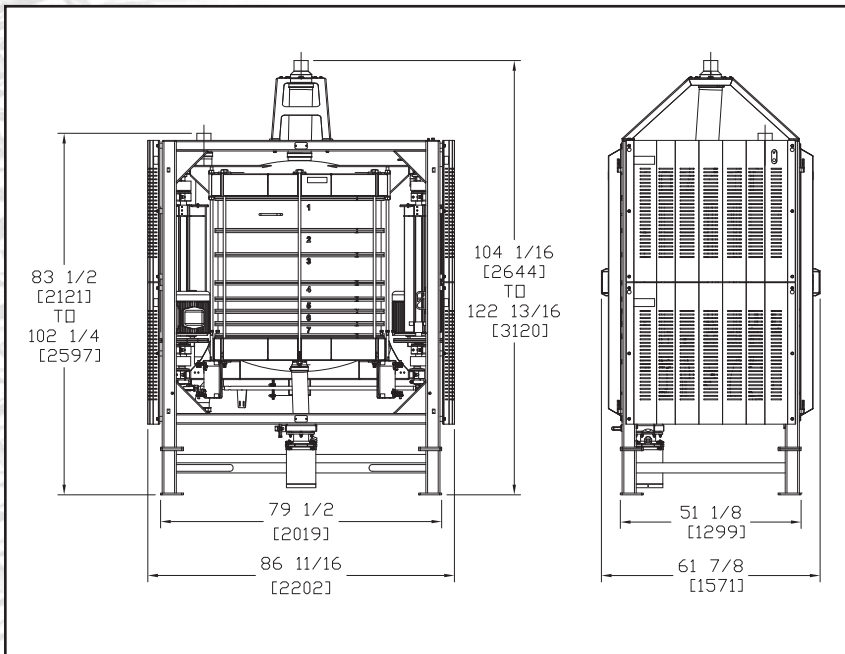
- Nominal Ø36" (Ø914 mm)
- Net cloth area 5 ft<sup>2</sup>/sieve (0.46 m<sup>2</sup>/sieve)
- Models with 2 to 7 sieves
- Net sieving area from 10 to 35 ft<sup>2</sup> (0.93 to 3.25 m<sup>2</sup>)
- One - 1-1/2 HP (1.1 kw) motor with V-belt drive
- Drive guards
- Up to Ø6" conveying lines
- Inlet and discharge support brackets
- Tailings container with manual butterfly valve
- Rates to 700 lbs/min (320 kg/min) on hard wheat flour with 30 mesh screens

Guards removed for clarity.

Standard arrangements illustrated. Custom arrangements are also available.  
Dimensions shown in inches (millimeters) are indicative and subject to change without notice.  
Contact Great Western for detailed installation drawings.

**Great  
Western  
Manufacturing**

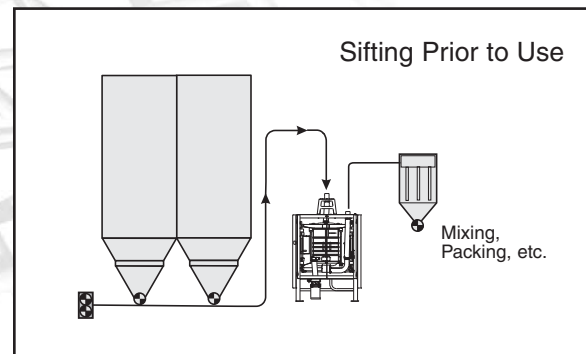
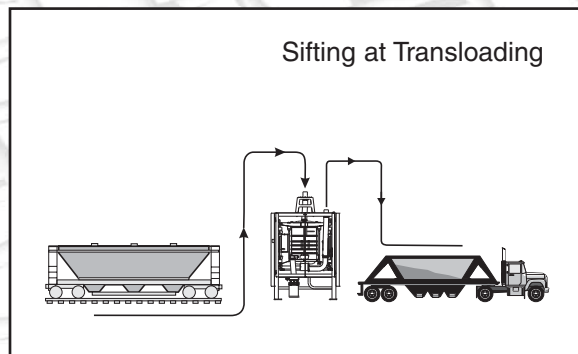
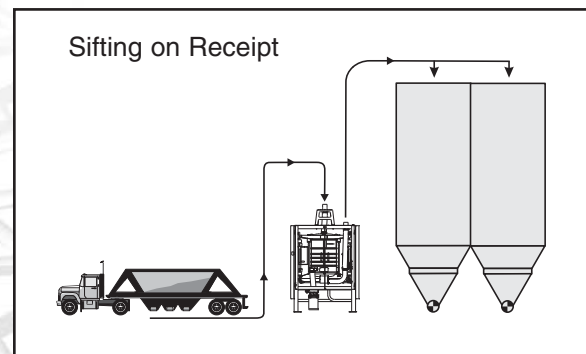
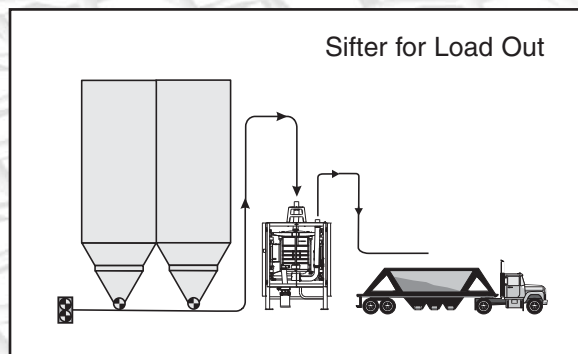
# QA Series In-Line Sifter Dimensions



## QA46

- Nominal Ø46" (Ø1168 mm)
- Net cloth area 8.9 ft<sup>2</sup>/sieve (0.83 m<sup>2</sup>/sieve)
- Models with 4 to 7 sieves
- Net sieving area from 35.6 to 62.3 ft<sup>2</sup> (3.31 to 5.79 m<sup>2</sup>)
- Two - 1-1/2 HP (1.1 kw) motors with V-belt drives
- Drive guards
- Up to Ø6" conveying lines
- Inlet and discharge support brackets
- Tailings container with manual butterfly valve
- Rates to 1200 lbs/min (545 kg/min) on hard wheat flour with 30 mesh screens

Guards removed for clarity.



Standard arrangements illustrated. Custom arrangements are also available.

Dimensions shown in inches (millimeters) are indicative and subject to change without notice.

Contact Great Western for detailed installation drawings.

**Great Western Manufacturing**

P.O. Box 149  
2017 S. 4th Street  
Leavenworth, KS 66048-0149  
p 913-682-2291 • f 913-682-1431  
www.gwmfg.com • sifter @gwmfg.com